

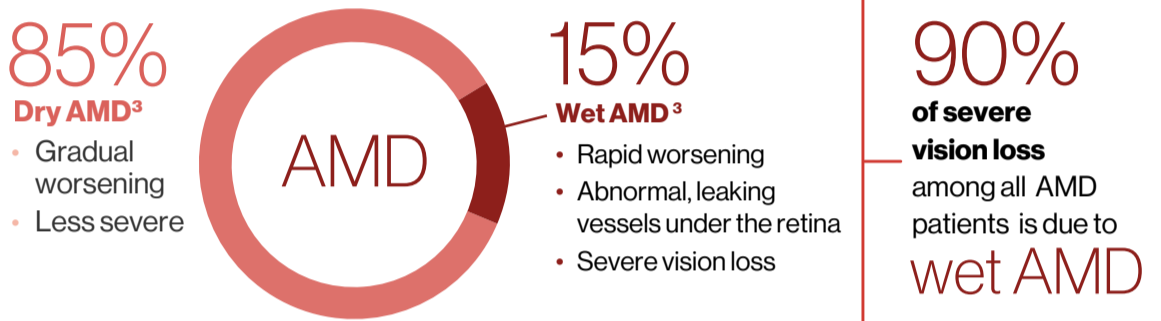
Wet age-related macular degeneration (wet AMD)

Wet AMD (also known as neovascular AMD, or nAMD) is an eye disease that damages a portion of the retina called the macula. The macula is located in a region near the back of the eye and is necessary for sharp vision. Wet AMD leads to a loss of central vision and the ability to see things directly ahead.

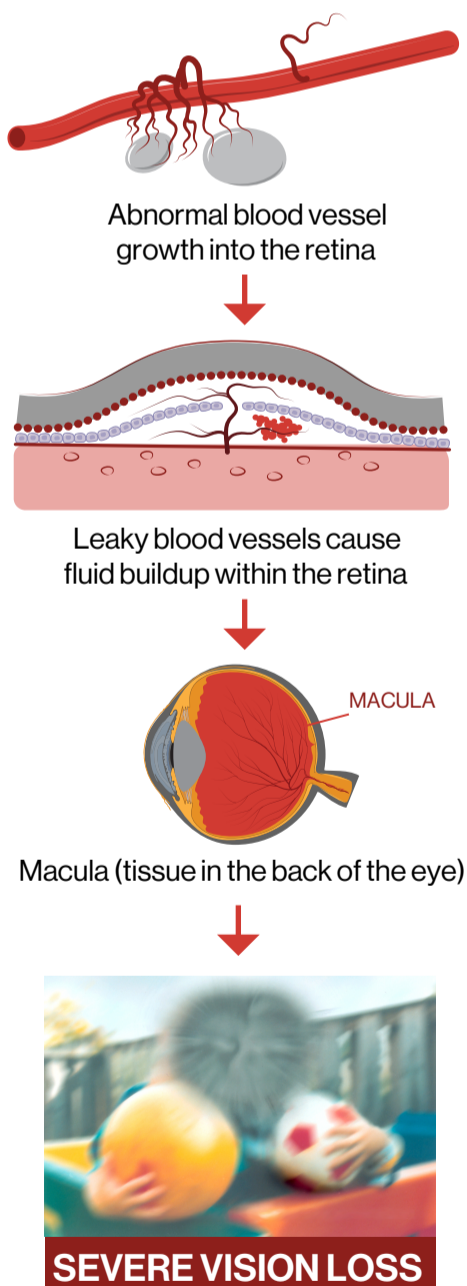
AMD: A global health problem



Two types of AMD



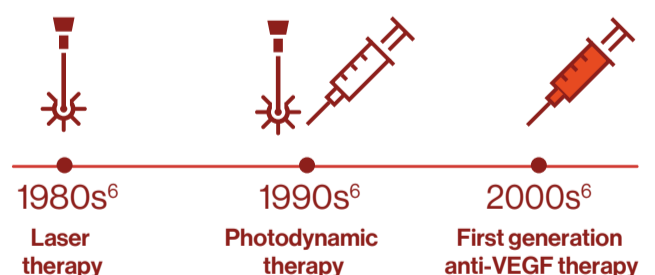
How does wet AMD affect the eye?



Wet AMD Risk Factors^{4,5}



Advancements in the treatment of wet AMD



What is an anti-VEGF drug?

A drug that blocks the activity of a protein called VEGF,* which drives the abnormal formation of blood vessels that can leak fluid resulting in swelling of the retina

* VEGF: vascular endothelial growth factor

¹. Prevention of Blindness and Visual Impairment. WHO website. <http://www.who.int/blindness/causes/priority/en/index7.html>. Accessed October 2018. ². Wong WL, Su X, Li X, et al. Global prevalence of age-related macular degeneration and disease burden projection for 2020 and 2040: a systematic review and met analysis. *Lancet Glob Health*. 2014;2:106-16. ³. Gottlieb JL. Age-related macular degeneration. *JAMA*. 2002;288:2233-6. ⁴. Cheung CM, Laude A, Yeo I, et al. Systemic, Ocular and Genetic Risk Factors for Age-related Macular Degeneration and Polypoidal Choroidal Vasculopathy in Singaporeans. *Sci Rep*. 2017;7:41386. ⁵. Risk Factors for Macular Degeneration. American Macular Degeneration Foundation website. <https://www.macular.org/risk-factors>. Accessed October 2018. ⁶. Gehrs KM, Anderson DH, Johnson LV, and Hageman GS. Age-related macular degeneration—emerging pathogenetic and therapeutic concepts. *Ann Med*. 2006;38:450-471.