

Psoriasis

Facts



More than 125 million people are affected worldwide¹



Plaque psoriasis is the most common form of psoriasis²



Those with psoriasis suffering from a moderate-to-severe form, which can be difficult to treat³

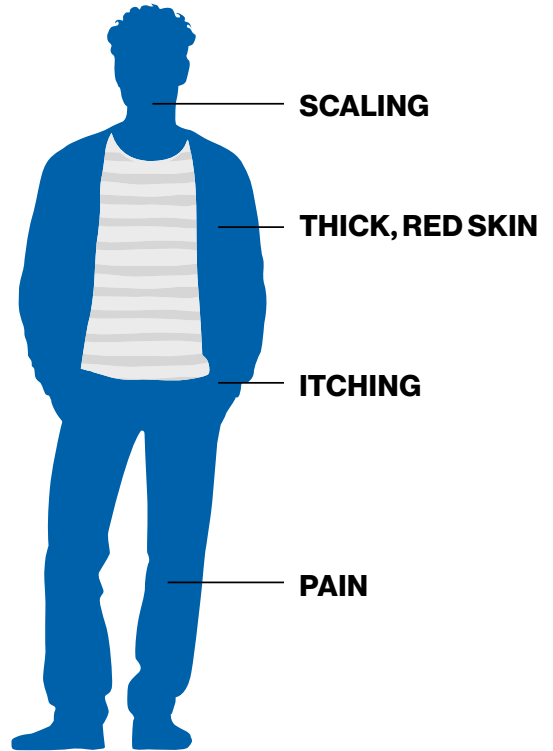


Psoriasis most often develops between the ages of 15 and 35⁴



90% of patients with psoriasis will also develop difficult to treat nail and palmoplantar psoriasis⁵

Physical Symptoms⁴



Effect on quality of life^{2,6-8}



Social isolation



Reduced ability to work



Anxiety



Depression

Co-morbidities⁶



Depression



Diabetes



Psoriatic arthritis



Heart disease

1. International Federation of Psoriasis Associations (IFPA) World Psoriasis Day website. Accessed February 2016

2. Nestle FO, Kaplan DH, Barker J. N Engl J Med 2009; 361(5):496-509.

3. Herrier R. Am J Health-Syst Pharm 2011; 68:795-806.

4. National Psoriasis Foundation. Psoriatic disease: about psoriasis. Accessed February 2016

5. Baran R. The burden of nail psoriasis: an introduction. Dermatol. 2010;221 Suppl 1:1-5

6. Farley E et al. G Ital Dermatol Venereol. 2011 Feb; 146(1):9-15.

7. Rapp SR, Feldman SR, Exum ML, Fleischer AB, Jr., Reboussin DM. J Am Acad Dermatol 1999; 41(3 Pt 1):401-7.

8. Guideline on clinical investigation of medicinal products indicated for the treatment of psoriasis. European Medicines Agency Web site. Accessed September 2015.